

The Phi Test Statistics Report

July 2019 - hriqtests.com. All Rights Reserved.

1- Fundamental descriptive statistics.

2- Reliability.

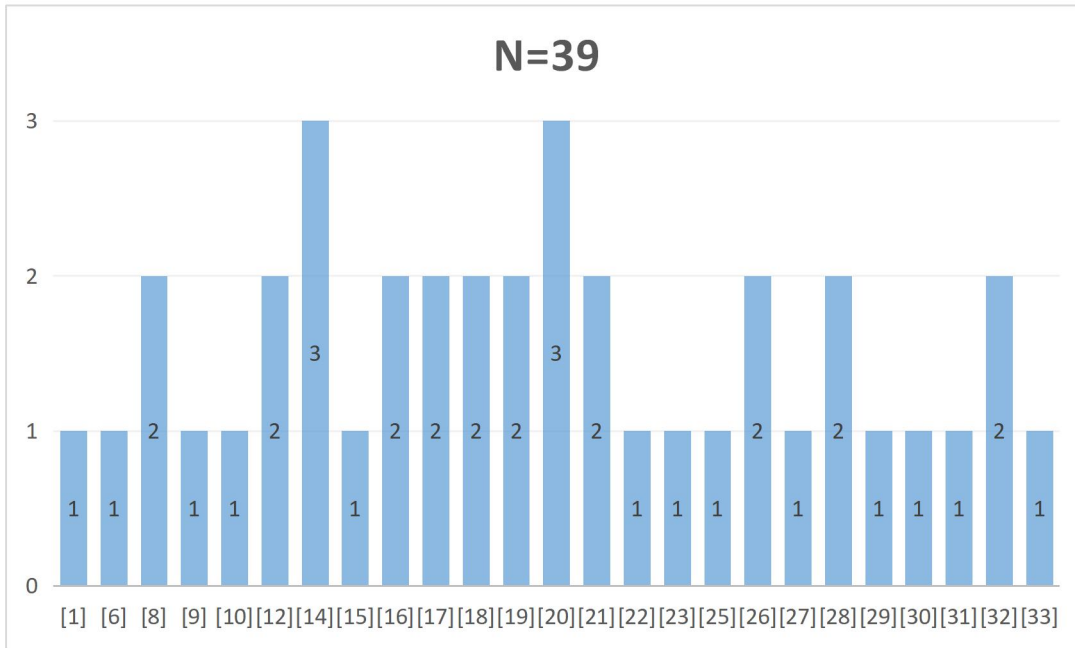
3- Correlation with standard psychometric batteries & tests by Dr. X. Jouve.

4- Scatterplots.

5- Norm.

(Proceed to next page)

1-Fundamental Descriptive Statistic.



Mean	19.41
Median	19
St. deviation	7.98
Variance	63.72
SEM (raw)	1.28
Skewness	-0.13
Kurtosis	-0.57

2-Reliability.

Cronbach's α	0.94
Split-half	0.96

Excellent reliability measures.

3-Correlations with standard supervised psychometric batteries & tests by Dr. Jouve

Standard tests used : RAPM (7), WAIS (7), CCFIT III (2), CFT 20-R (1), IBF-S (1), OLSAT (1), SPM (2), WPT (1), FRT-A (1), SBIS (1), ACT (1), Unknown Mensa Entrance Tests (3).

Dr. Jouve tests used : JCTI (5), C-09 (7), JCCES (4), C-10 (2), NVCPE-R (2), CSE (1), TLAP-R (2), TRI (1), IAW (1), CCAT (1).

Total* : Ceiling scores excluded.

Supervised* : Ceiling scores excluded.

MIQ : Mean IQ (M=100, SD=15).

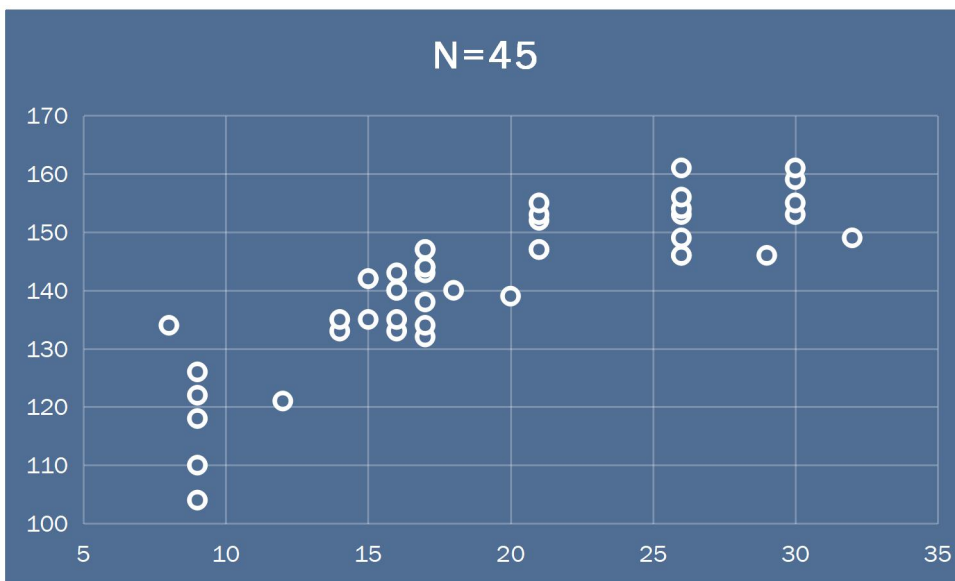
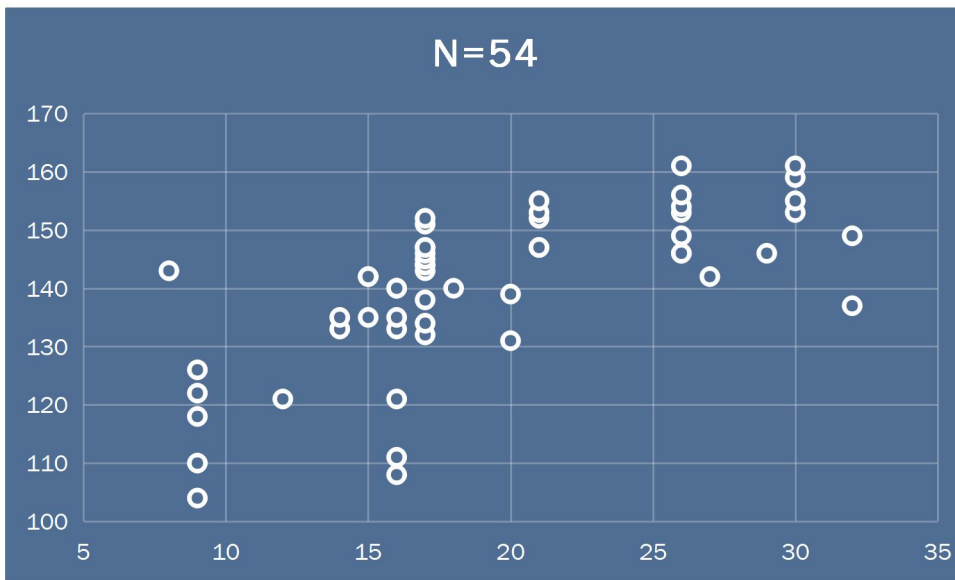
Mtest : Mean raw score on The Phi Test.

(-) as P-Value : Few observations - inaccurate values.

Test	Pairs (IQ range)	r	ρ	MIQ	MTest	P-Value
Total	54 (104 - 161)	0.67	0.74	140.24	19.24	<0.001
Total*	45 (104 - 161)	0.83	0.87	141.4	19.11	<0.001
Supervised	28 (104 - 155)	0.53	0.61	133.4	16.57	<0.001
Supervised*	19 (104 - 155)	0.81	0.86	133.26	15	<0.001
Dr. Jouve	26 (132 - 161)	0.75	0.79	147.35	22.12	<0.001
WAIS	7 (104 - 155)	0.9	0.8	124	11.43	-
RAPM	7 (111 - 147)	0.27	0.67	134.71	19	-
C-09	7 (132 - 153)	0.79	0.78	142.71	21.86	-
JCTI	5 (139 - 153)	0.67	0.8	147.4	23.2	-
JCCES	4 (142 - 155)	0.98	1	146.25	20	-

4-Scatterplots

Scatterplots on total (N=54) & total* (N=45) number of score pairs follow.



5-Norm

Presentation of Theoretical IQ (M=100, SD=15) per raw score points follows.

Raw Score	IQ	Raw Score	IQ
5	<=	23	149
6	111	24	150
7	114	25	151
8	117	26	153
9	122	27	154
10	124	28	156
11	126	29	157
12	127	30	159
13	129	31	161
14	130	32	165
15	134	33	168
16	136	34	172
17	139	35	175
18	142	36	179
19	143	37	183
20	144	38	187
21	146	39	191
22	147	40	194

Theoretical IQ values on raw scores >35 are currently rough approximations.