

SEE30 Statistics Report

July 2019 - hriqtests.com. All Rights Reserved.

1- Fundamental descriptive statistics.

2- Reliability.

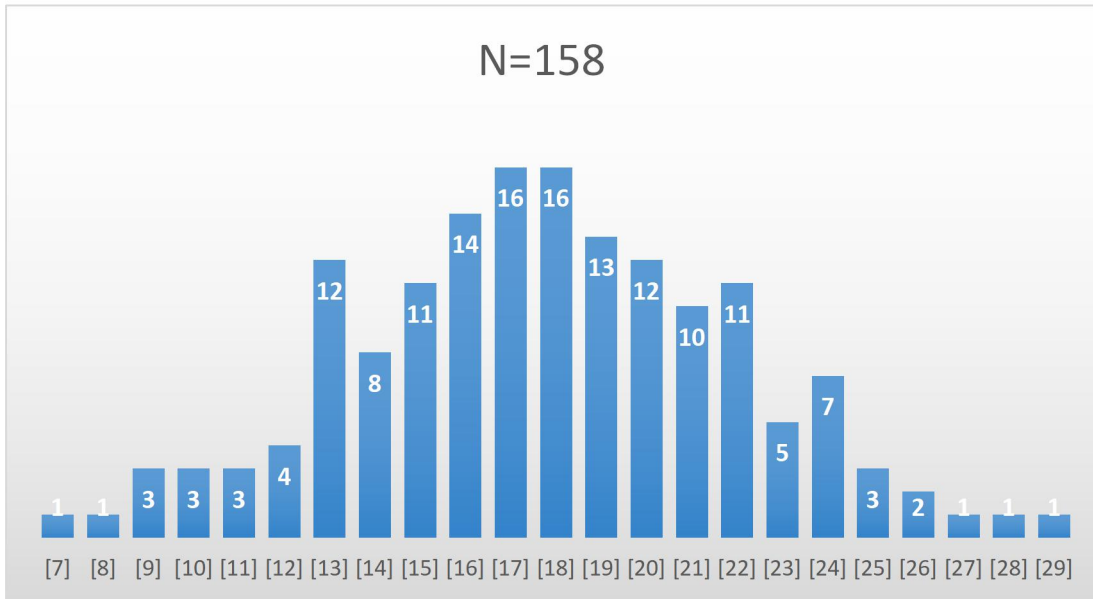
3- Correlation with standard psychometric batteries & tests by Dr. X. Jouve.

4- Scatterplots.

5- Norm.

(Proceed to next page)

1-Fundamental Descriptive Statistic.



Mean	17.74
Median	18
St. deviation	4.22
Variance	17.83
SEM (raw)	0.34
Skewness	0.01
Kurtosis	-0.15

2-Reliability.

Cronbach's α	0.91
Split-half	0.88

Excellent reliability measures.

3-Correlations with standard supervised psychometric batteries & tests by Dr. Jouve

Standard tests used : RAPM (15), WAIS (15), CCFIT III (5), CFT 20-R (1), BADyG-M (1), GAMA (1), IBF-S (2), IST 2000 (2), IST 70 (1), MAT (1), OLSAT (1), SPM (2), RIAS (1), WPT (1), FRT-A (6), Unknown Mensa Entrance Tests (7).

Dr. Jouve tests used : JCTI (18), C-09 (12), JCCES (4), C-10 (2), NVCPE-R (2), NVCPE (1), CSE (2), Encephalitest (2), TLAP-R (5), TRI (3), IAW (1), CCAT (1).

Total* : Ceiling scores excluded.

Supervised* : Ceiling scores excluded.

MIQ : Mean IQ (M=100, SD=15).

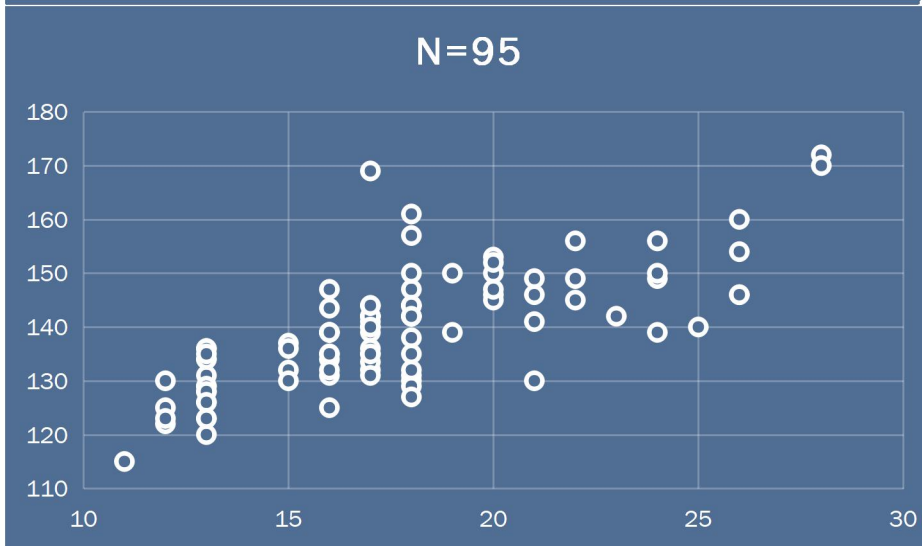
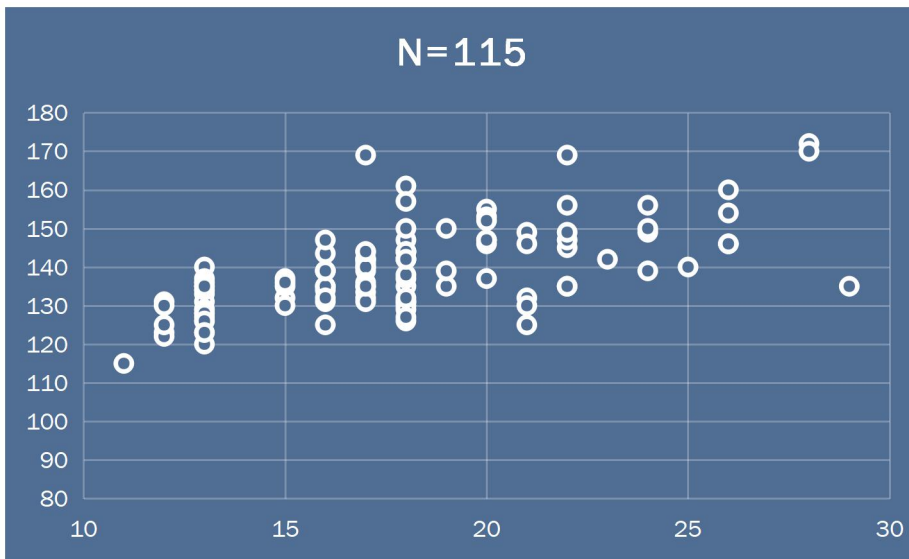
Mtest : Mean raw score on The Phi Test.

(-) as P-Value : Few observations - inaccurate values.

Test	Pairs (IQ range)	r	ρ	MIQ	MTest	P-Value
Total	115 (115 - 172)	0.64	0.64	138.96	17.7	<0.001
Total*	95 (115 - 172)	0.73	0.74	139.47	17.68	<0.001
Supervised	62 (115 - 172)	0.59	0.61	137.75	17.58	<0.001
Supervised*	42 (115 - 172)	0.79	0.81	138.35	17.52	<0.001
Dr. Jouve	53 (120 - 170)	0.67	0.69	140.37	17.77	<0.001
WAIS	15 (115 - 156)	0.87	0.89	137.13	17.33	<0.001
RAPM	15 (130 - 147)	0.69	0.59	136.47	16.47	0.021
CCFIT III	5 (126 - 172)	0.84	0.7	149.2	19.6	-
JCTI	18 (123 - 160)	0.87	0.86	136.13	17.33	0.033
C-09	12 (120 - 149)	0.72	0.62	146.25	20	-
TLAP-R	5 (128 - 152)	0.7	0.7	139.2	18.4	-
JCCES	4 (127 - 154)	0.73	0.32	140.75	19.5	-

4-Scatterplots

Scatterplots on total (N=115) & total* (N=95) number of score pairs follow.



5-Norm

Presentation of Theoretical IQ (M=100, SD=15) per raw score points follows.

Raw Score	IQ	Raw Score	IQ
7	<=96	19	144
8	102	20	147
9	108	21	150
10	115	22	153
11	118	23	156
12	122	24	160
13	127	25	163
14	129	26	167
15	132	27	170
16	134	28	174
17	137	29	178
18	141	30	190

Theoretical IQ value on raw score of 30 is currently a rough approximation and remains to be determined (hopefully) in the future.