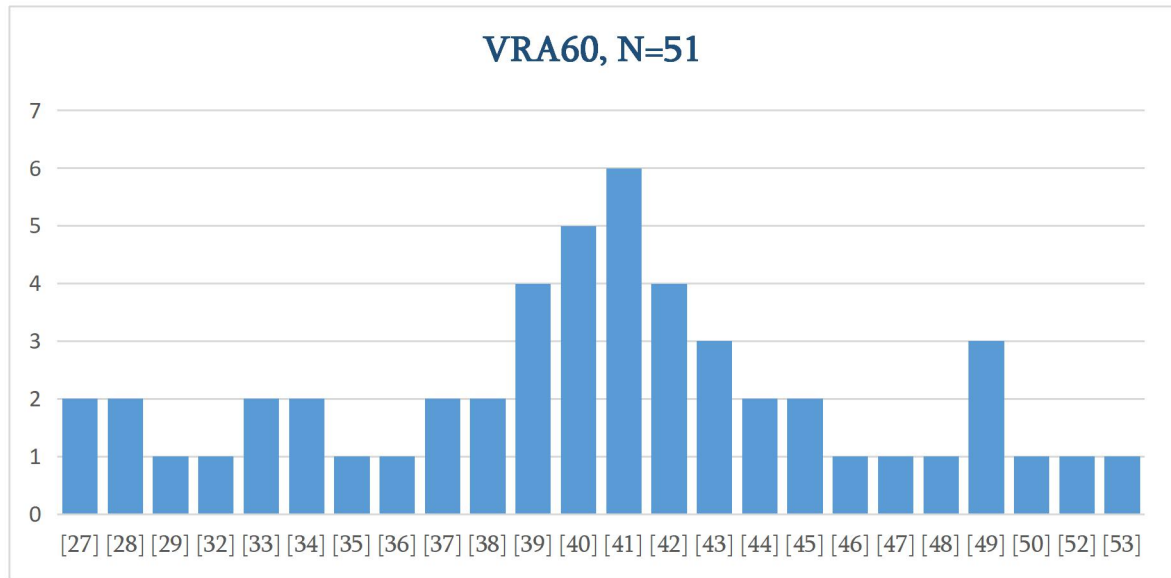


## VRA60 Stats & Norm

April 2021

VRA60 reached quickly 51 answer submissions. As is the case for most such questionnaires, a group of extremely capable individuals submitted answers (mean IQ of ~141, N=40, at standard supervised psychometric batteries, with a mean raw score of ~41 at VRA60).



Mean	40,12
Median	41
Mode	41
SD	6,3
Variance	39,75
SEM	0,88
Cronbach's $\alpha$	0,93

As was noticed above, due to specific group's high capability, possible "Floor effect" is noticed on this test, at raw score of 27.

### Native Vs Non-native speakers (English)

Test's language is English - note, however, that despite speaking English fluently (almost), author's native language isn't English. Ideally, items of such tests shouldn't be based on idioms or significantly culturally-influenced - in terms of reasoning over provided concepts. Unfortunately, this sometimes can't be avoided. Difference in performance between native and non-native speakers should always be investigated and if needed, norms should be adapted accordingly.

	Mean	Max	Min	Median	Mode
Non-native speakers (36)	40,1	52	27	40,5	40
Native Speakers (15)	40,1	53	27	41	33

Although most figures seem identical, mode differs significantly. Big difference in scores' distribution is noticed; however, sample sizes are significantly different, too. More data will lead to a safe conclusion.

### Correlation with standard psychometric batteries & other relevant tests

Correlations with standard psychometric batteries & tests by Dr. Jouve, follow. Tests used : WAIS, RAPM, CCFIT, SBIS RSPM, Raven's 2, FRT-A, FRT-B, IST70R, ACT (their theoretical score-to-IQ correlation), Unknown Mensa Entrance Test, C-09, CCAT, JCCES, JCTI, TRI, IAW, TLAP-R & NVCPE-R.

Test	Pairs (Range)	Rho	MeanRaw	MeanIQ
Total	78 (95-170)	0,87	41,59	141,83
Supervised	40 (95-170)	0,91	41,30	141,13
WAIS/SBIS	21 (95-170)	0,92	40,67	140,00
WAIS	20 (95-170)	0,92	41,10	140,95
Raven's Series	10 (126-160)	0,73	42,30	142,50
Jouve	38 (121-170)	0,81	41,89	142,58
JCTI/TRI	17 (121-158)	0,80	41,41	141,47
JCTI	13 (121-157)	0,78	41,31	140,85
CCAT/JCCES	6 (130-170)	0,94	45,50	149,33

### Raw Score to IQ (Theoretical IQ) transformation

Norm follows, according to aforementioned correlations.

RS: Raw score on VRA60 (x/60).

TIQ: Theoretical IQ attributed to raw score points achieved (M=100, SD=15).

CI 95% : Confidence Interval (95%).

RS	TIQ	CI 95%	RS	TIQ	CI 95%
26	<=106	-	41	141	137-145
27	106	102-112	42	143	139-147
28	110	106-114	43	145	141-149
29	114	110-118	44	148	144-152
30	116	112-120	45	150	146-154
31	118	114-122	46	152	148-156
32	120	116-124	47	154	150-158
33	122	118-126	48	156	152-160
34	124	120-128	49	160	156-164
35	126	122-130	50	164	160-168
36	128	124-132	51	166	162-170
37	130	126-134	52	168	164-172
38	133	129-137	53	169	165-173
39	135	131-139	54	170	-
40	138	134-142	55	172	-