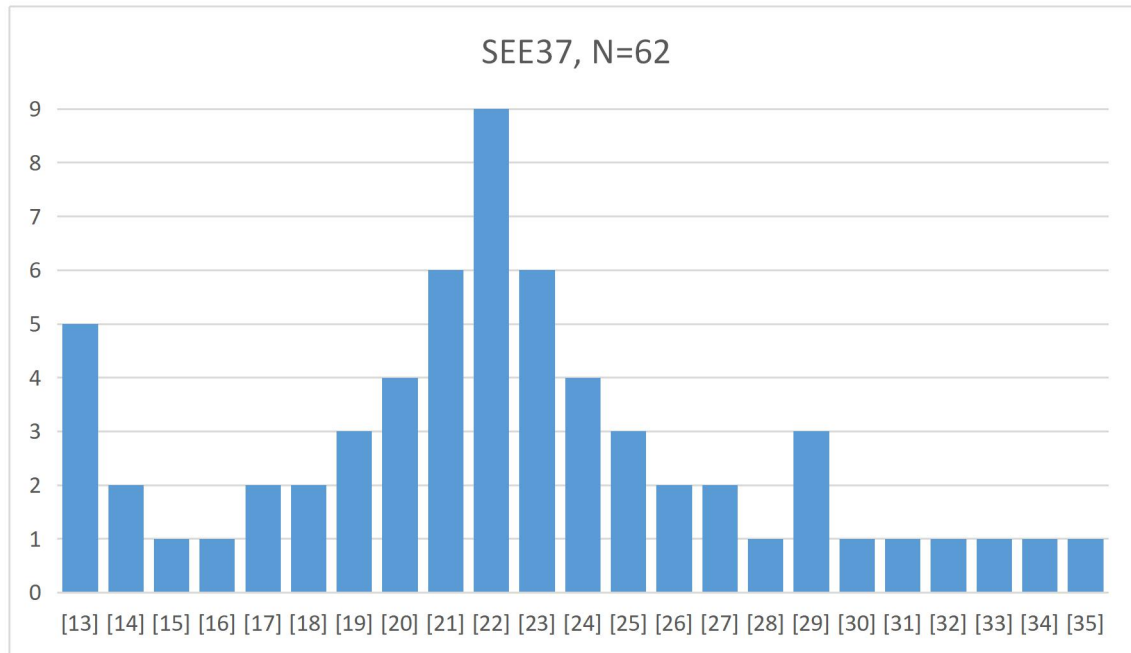


SEE37 Stats & Norm

June 16th, 2021

SEE37 reached 62 candidates; due to sufficient incoming data, a decent norming approach was made possible.

Graph, descriptive figures & correlation table follow; next report will be presented at a total of 80-100 candidates, along with some extra information regarding age groups, nationalities etc.



Possible “Floor effect” is noticed on this test, at raw score of 13.

Mean	21,13
Median	21,5
SD	5,02
Variance	25,22
SEM	0,92
Cronbach's α	0,89

Correlations with standard psychometric batteries & tests by Dr. Jouve, follow. Tests used : WAIS, RAPM, RSPM, SBIS, Raven's 2, FRT-A, FRT-B, CFT20R, ACT (their theoretical score-to-IQ correlation), Unknown Mensa Entrance Test (Matrix tests, probably FRT or RAPM), C-09, C-10, CCAT, JCTI, TRI, CSE, IAW, TLAP-R & NVCPE-R.

Category “Spatial” is introduced, which shows correlation with Raven series (RAPM, RSPM, Raven's 2) and FRT series (A and B), as well as “Spatial Total”, with JCTI and TRI added to the aforementioned set of tests.

Table follows in the next page.

Test	Pairs (Range)	Rho	MeanRaw	MeanIQ
Total	75 (114-181)	0,82	24,51	147,52
Supervised	42 (114-181)	0,81	24,71	147,98
WAIS	16 (114-175)	0,82	23,88	146,44
Spatial Total	28 (121-181)	0,86	24,82	149,18
Spatial	16 (131-181)	0,93	24,81	151,31
Raven's Series	9 (133-160)	0,83	24,22	148,33
Jouve	33 (121-172)	0,85	24,24	146,94
JCTI/TRI	13 (121-162)	0,72	24,54	146,15
JCTI	9 (121-148)	0,87	23,00	141,89
C-09	8 (132-172)	0,91	24,50	148,00

Norm follows, according to aforementioned correlations.

RS: Raw score on SEE37 ($x/37$).

TIQ: Theoretical IQ attributed to raw score points achieved ($M=100$, $SD=15$).

RS	TIQ	RS	TIQ
12	<=114	25	148
13	114	26	151
14	117	27	154
15	120	28	157
16	123	29	159
17	126	30	162
18	129	31	165
19	131	32	168
20	134	33	171
21	137	34	175
22	140	35	180
23	143	36	184
24	145	37	>=190